



SUBARU

CROSSTREK



It's about everything that lies between points A and B.

Meet the 2025 Subaru Crosstrek

There are miles to go before you reach that campsite you booked months ago, but in your 2025 Crosstrek, the adventure can always start right here on the road. So feel free to explore all those in-between destinations along the way. Once you arrive and take in the view, you might even consider a point C.

Capable

Beyond the roads that are smooth and flat, the Crosstrek proves itself with standard Subaru Symmetrical Full-Time All-Wheel Drive and up to 235 mm of ground clearance¹. If the terrain gets steep and slippery, available dual-function X-MODE[®] provides the traction and confidence you need to push on².

Durable

Every Subaru is built to last. That's thanks in part to the SUBARU BOXER[®] engine. Its horizontal design means less wear and tear—and it's at the core of every Crosstrek. There's also an engine option with more power to push your adventures farther.

Connected

Providing you with simple, seamless access to your music and apps, SUBARU STARLINK[®] smartphone integration includes standard Apple CarPlay^{®3} and Android[™] Auto⁴ integration. Wireless connectivity and charging are also available for even greater ease², plus you can opt for a larger 11.6-inch touchscreen² and Remote Engine Start with Climate Control, which lets you set the perfect temperature even before you step in^{2,5}.

Safe

To help protect you and your passengers, the Crosstrek is equipped with our latest EyeSight[®] Driver Assist Technology, with an additional wide-angle camera for enhanced detection and intervention performance⁶. For even greater peace of mind, you can opt for a number of all-around safety systems, including Blind-Spot Detection^{2,7}, Reverse Automatic Braking^{2,8}, SUBARU STARLINK Connected Services^{2,9} and the DriverFocus[™] Distraction Mitigation System^{2,10} to help reduce distracted or drowsy driving.





1 Wilderness trim only. All other trim levels ground clearance at 220 mm. See your Subaru dealer for details. 2 Availability varies by trim level. See your Subaru dealer for details. 3 Apple CarPlay® is a registered trademark of Apple Inc.[†] 4 Android™ is a trademark of Google LLC[†]. 5 Requires Keyless Access with Push-Button Start and subscription to STARLINK® Connected Services. 3-year free trial included. See your Subaru dealer for details. 6 EyeSight® is a driver assist technology, which may not operate optimally under all driving conditions. The driver is always responsible for safe and attentive driving. System effectiveness depends on many factors, such as vehicle maintenance, weather and road conditions. Advanced Adaptive Cruise Control and Brake Light Recognition are designed to assist the driver and are not substitutes for safe and attentive driving. Lane Departure Prevention operates only when the lane markings are visible, and system effectiveness depends on many factors. Lane centring function operates only when used in conjunction with Advanced Adaptive Cruise Control. See Owner's Manual for complete details on system operations and limitations. 7 Blind-Spot Detection, Lane Change Assist and Rear Cross-Traffic Alert are systems designed to assist the driver by monitoring the rear and side areas of the vehicle during a lane change or reversing and are not a substitute for safe and attentive driving. 8 The Reverse Automatic Braking System is not a substitute for safe and attentive driving. System effectiveness depends on many factors, such as vehicle maintenance, vehicle speed, weather and road conditions. Always exercise caution and use vehicle mirrors and the rearview camera when backing up. See Owner's Manual for complete details on system operations and limitations. 9 Activation with subscription required. 10 The DriverFocus Distraction Mitigation System is a driver recognition technology designed to alert drivers if their attention to the road wavers or if the driver's face appears to turn away. The driver is always responsible for safe and attentive driving. System effectiveness may be affected by articles of clothing worn on the head or face. See Owner's Manual for complete details on system operations and limitations.

Miles of good road ahead.

When conditions get slippery, steep or bumpy, there's no need to reroute. You're in the 2025 Crosstrek, which means you have standard Subaru Symmetrical Full-Time All-Wheel Drive and up to 235 mm of reassuring ground clearance¹. Facing hilly or challenging terrain? X-MODE[®] with Hill Descent Control enhances traction so you can forge ahead with confidence.





1 Wilderness trim only. All other trim levels ground clearance at 220 mm. See your Subaru dealer for details.

A drive on the wild side.

The Crosstrek Wilderness

Steep, slippery, rocky—it's all waiting to be explored in the Crosstrek Wilderness. To take on just about anything, this Crosstrek has 235 mm of ground clearance, advanced dual-function X-MODE® and Yokohama®¹ GEOLANDAR All-Terrain tires. Its optimized final drive ratio improves torque delivery and acceleration, while its ability to tow up to 1588 kg² means you can BYO base camp wherever you go. Inside, StarTex water-repellent upholstery is designed to stand up to dirt, mud or other signs of an adventure well-taken.





1. Yokohama® is a registered trademark of Yokohama Tire Corp. 2. Trailer brakes may be needed. Some safety features, including X-MODE, Reverse Automatic Braking, Blind-Spot Detection and Rear Cross-Traffic Alert, may not function properly when towing. See your Subaru dealer for details.





Bring it. All of it.

Gear-friendly and Versatile

The Crosstrek takes the process out of packing up. You have up to 1549 litres¹ of cargo room and a host of versatile features to work with, including a wide rear gate opening, standard roof rails and a cargo tonneau cover² to keep your gear protected in the back. There's also a 60/40-split flat-folding rear seatback to accommodate longer items and a passenger or two on the same trip.



Vehicles shown with optional accessories. See your Subaru dealer for details. ¹ With seatbacks lowered. ² Onyx, Wilderness and Limited trims only. See your Subaru dealer for details.

Compact or roomy? Yes.

Though it might be able to squeeze into tight parking spots, the Crosstrek is noticeably roomy on the inside, with up to 2846 litres¹ of passenger space. Enter easily through its wide door openings and sink into its supportive seats, available in durable cloth, all-weather soft-touch upholstery² or supple leather³. It won't matter if your journey has hours left to go.



Power-sliding, tilt-adjustable glass sunroof⁴



Heated steering wheel⁴

1 Without available power sunroof. 2 Wilderness trim only. See your Subaru dealer for details. 3 Limited trim only. See your Subaru dealer for details. 4 Onyx, Wilderness and Limited trims only. See your Subaru dealer for details. 5 Touring, Onyx, Wilderness and Limited trims only. See your Subaru dealer for details.









Make a connection.

Wherever you're headed, the 2025 Crosstrek keeps you connected. SUBARU STARLINK® smartphone integration comes standard with Apple CarPlay®¹ and Android™ Auto² integration, plus you can opt for available wireless connectivity³ and Qi® wireless smartphone charging^{3,4,5} to keep your cockpit cable-free. Other available features include a large 11.6-inch touchscreen³ and a Harman Kardon®⁶ premium audio system with 10 speakers³, so you can listen to your playlists as they were intended. Thanks to the convenience of Remote Engine Start with Climate Control, you can even use your phone to set the perfect temperature even before you step in^{3,7}.



¹ Apple CarPlay® is a registered trademark of Apple Inc.[†] ² Android™ is a trademark of Google LLC[†]. ³ Availability varies by trim level. See your Subaru dealer for details. ⁴ Qi® is a registered trademark of Wireless Power Consortium, Inc. ⁵ Qi wireless charging may not be compatible with all mobile devices. When using the wireless charging system, avoid placing metal objects between the wireless charger and the mobile device when charging is active. Doing so may cause metal objects to become hot and could cause burns. ⁶ Harman Kardon® is a registered trademark of Harman International Industries, Inc. ⁷ Requires Keyless Access with Push-Button Start and subscription to STARLINK® Connected Services. 3-year free trial included. See your Subaru dealer for details.

An extra set of eyes every time you drive.

Every Crosstrek includes the latest Subaru EyeSight® Driver Assist Technology¹, with a third wide-angle camera to better detect pedestrians and bicycles, an electronic brake booster to heighten responsiveness and Automatic Emergency Steering^{2,3}. Equipped with a comprehensive suite of innovative safety features, EyeSight looks ahead, alerts you to potential dangers and can even intervene to help you avoid a collision.



1 EyeSight® is a driver assist technology, which may not operate optimally under all driving conditions. The driver is always responsible for safe and attentive driving. System effectiveness depends on many factors, such as vehicle maintenance, weather and road conditions. Pre-Collision Braking is designed to provide automatic braking that either prevents a collision or reduces the severity of a frontal impact. Pre-Collision Throttle Management is designed to reduce acceleration and minimize the severity of certain frontal impacts. Lane centring function operates only when used in conjunction with Adaptive Cruise Control. Lane Departure and Sway Warning with Lane Keep Assist operates only when the lane markings are visible, and its effectiveness depends on many factors. See Owner's Manual for complete details on system operations and limitations. 2 Availability varies by trim level. See your Subaru dealer for details. 3 Automatic Emergency Steering is a system designed to assist the driver. It is not a substitute for safe and attentive driving. Automatic Emergency Steering works in conjunction with and after Pre-Collision Braking has been activated by providing steering support at speeds of approximately 80 km/h and lower to try and help avoid a collision. See Owner's Manual for complete details, including important system limitations.



Automatic Emergency Steering^{2,3}

Can help you avoid a collision by providing automatic steering and pre-collision braking support if it determines there's enough space to intervene.



Pre-Collision Braking¹

Can help slow and bring your Crosstrek to a full stop if necessary.



Advanced Adaptive Cruise Control with Lane Centring¹

Automatically keeps you centred in your lane, at a safe distance behind the car in front of you—even in traffic and around curves.



Pre-Collision Throttle Management¹

Can reduce your engine power to help give you more time to react and to help minimize the possible impact force and frontal impact damage.



Lane Departure and Sway Warning with Lane Departure Prevention¹

Can alert you with visual and audible warnings if you drift to the edge of your lane and begin to cross into another. And when activated, Lane Departure Prevention can even help steer you back into your proper course.



Blind-Spot Detection

Using radar sensors, Blind-Spot Detection warns you with a visual indicator on your exterior mirror if it senses a vehicle in your blind spot. Another feature of this system, Lane Change Assist, alerts you with a flashing indicator on your exterior mirror if it senses a vehicle approaching at a higher speed in a neighbouring lane and you signal for a lane change^{3,5}.



Rear Cross-Traffic Alert

Rear Cross-Traffic Alert uses radar sensors to help warn you of traffic approaching from the side as you are backing up, utilizing a flashing visual indicator on your exterior mirror and rearview camera display as well as an audible warning^{3,5}.

1 Always wear seat belts. Children should be properly restrained in the rear seat. 2 EyeSight® is a driver assist technology, which may not operate optimally under all driving conditions. The driver is always responsible for safe and attentive driving. System effectiveness depends on many factors, such as vehicle maintenance, weather and road conditions. See Owner's Manual for complete details on system operations and limitations. 3 Availability varies by trim level. See your Subaru dealer for details. 4 The DriverFocus Distraction Mitigation System is a driver recognition technology designed to alert drivers if their attention to the road wavers or if the driver's face appears to turn away. The driver is always responsible for safe and attentive driving. System effectiveness may be affected by articles of clothing worn on the head or face. See Owner's Manual for complete details on system operations and limitations. 5 Blind-Spot Detection, Lane Change Assist and Rear Cross-Traffic Alert are systems designed to assist the driver by monitoring the rear and side areas of the vehicle during a lane change or reversing and are not a substitute for safe and attentive driving. 6 The Reverse Automatic Braking System is not a substitute for safe and attentive driving. System effectiveness depends on many factors, such as vehicle maintenance, vehicle speed, weather and road conditions. Always exercise caution and use vehicle mirrors and the rearview camera when backing up. See Owner's Manual for complete details on system operations and limitations. 7 Activation with subscription required.

Your peace of mind is our strong suit.

Safety is more than a duty for us—it's a passion. That's why every Crosstrek is built on the strength of the Subaru Global Platform, providing a rigid body structure for high crash-energy absorption. And every Crosstrek comes with 8 airbags, including a front-passenger seat cushion airbag¹. To enhance all-around awareness and visibility, other standard features include a rearview camera plus LED Steering Responsive Headlights with High Beam Assist. And with a number of available active safety systems, you can have even more peace of mind as you get out there.



Creating safer roads by reducing distracted driving.

Subaru is taking on one of the biggest issues in the automotive industry: distracted driving. The Crosstrek features an award-winning, state-of-the-art safety system that helps reduce distracted driving for both new and experienced drivers. Working with EyeSight^{®2} Driver Assist Technology, DriverFocus^{™3,4} is like having an attentive co-pilot along for the ride, ready to give a helpful alert if a driver becomes distracted or drowsy.



Reverse Automatic Braking

Reverse Automatic Braking can detect objects directly behind your vehicle when backing up at a low speed and can help bring the Crosstrek to a stop if it detects an object within its range and the brakes have yet to be applied. There's also the rearview camera to help you keep an eye out^{3,6}.



SUBARU STARLINK[®] Connected Services

The Crosstrek also features SUBARU STARLINK Connected Services technology, bringing you added safety, security and convenience^{3,7}. It can alert a first responder in an emergency, help police locate your vehicle if it's stolen and more. And to get you started, new Crosstrek drivers enjoy a free three-year SUBARU STARLINK Connected Services subscription, which includes Advanced Automatic Collision Notification, Enhanced Roadside Assistance, SOS Emergency Assistance and more.

2025 Crosstrek | Features & Dimensions

Apple CarPlay^{®1,2} / Android[™] Auto^{2,3}



Power Glass Sunroof⁴ and Roof Rails



18-inch Aluminum-alloy Wheels⁵



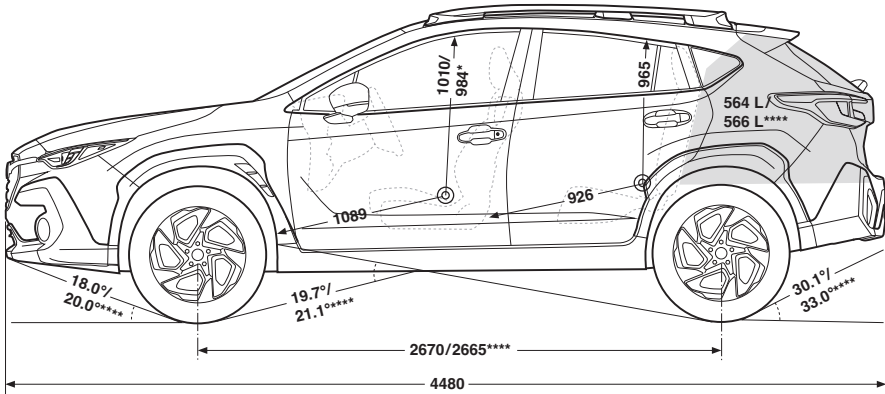
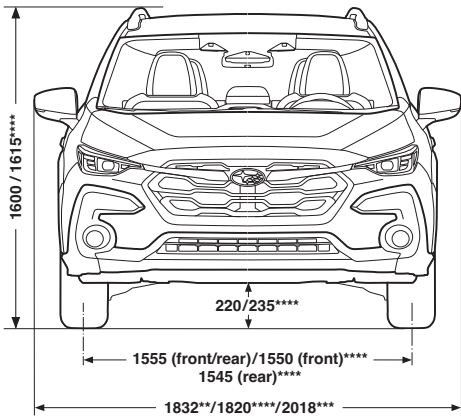
10-way Power Driver's Seat⁴



Dual-zone Automatic Climate Control



Heated Steering Wheel⁶



Measurements in millimetres unless specified.
* With available sunroof.
** With mirrors folded.
*** Mirrors extended.
**** Wilderness trim level.

For a detailed list of specifications, features, accessories and model comparisons, please visit Subaru.ca or your nearest authorized Subaru Dealer.

1 Apple CarPlay[®] is a registered trademark of Apple Inc.¹ 2 Compatible smartphone and applications required. Data provided by smartphone is displayed on the audio system screen. Some provinces prohibit the operation of handheld electronic devices while operating a vehicle. Smartphone apps should only be launched when vehicle is safely parked. Your wireless carrier's rates may apply. 3 Android[™] is a trademark of Google LLC¹. 4 Onyx, Wilderness and Limited trims only. Not available on Convenience and Touring trims. 5 Onyx and Limited trims only. Finish will vary. 6 Touring, Onyx, Wilderness and Limited trims only. 7 EyeSight[®] is a driver assist technology, which may not operate optimally under all driving conditions. The driver is always responsible for safe and attentive driving. System effectiveness depends on many factors, such as vehicle maintenance, weather and road conditions. See Owner's Manual for complete details on system operations and limitations. 8 Bluetooth[®] is a registered trademark of Bluetooth SIG, Inc., America. 9 Activation and required monthly subscription sold separately. Includes 3-month free trial subscription. See your Subaru dealer for details. SiriusXM[®] and the SiriusXM logo, channel names and logos are trademarks of Sirius XM Radio Inc. and are used under licence by Sirius XM Canada Inc. Subscriptions to SiriusXM Canada are subject to the SiriusXM Canada Customer Agreement and other terms & conditions. SiriusXM collects, uses and discloses your personal information according to its Privacy Policy. 10 Blind-Spot Detection, Lane Change Assist and Rear Cross-Traffic Alert are systems designed to assist the driver by monitoring the rear and side areas of the vehicle during a lane change or reversing and are not a substitute for safe and attentive driving. 11 Activation with subscription required. 12 Qi[®] wireless charging may not be compatible with all mobile devices. When using the wireless charging system, avoid placing metal objects between the wireless charger and the mobile device when charging is active. Doing so may cause metal objects to become hot and could cause burns. 13 Qi[®] is a registered trademark of Wireless Power Consortium, Inc. 14 The Reverse Automatic Braking System is not a substitute for safe and attentive driving. System effectiveness depends on many factors, such as vehicle maintenance, vehicle speed, weather and road conditions. Always exercise caution and use vehicle mirrors and the rearview camera when backing up. See Owner's Manual for complete details on system operations and limitations. 15 The DriverFocus Distraction Mitigation System is a driver recognition technology designed to alert drivers if their attention to the road wavers or if the driver's face appears to turn away. The driver is always responsible for safe and attentive driving. System effectiveness may be affected by articles of clothing worn on the head or face. See Owner's Manual for complete details on system operations and limitations. 16 Harman Kardon[®] is a registered trademark of Harman International Industries, Inc. 17 Trailer brakes may be needed. Some safety features, including X-MODE, Reverse Automatic Braking, Blind Spot-Detection and Rear Cross-Traffic Alert, may not function properly when towing. See your Subaru dealer for details. 18 Yokohama[®] is a registered trademark of Yokohama Tire Corp.

2025 Crosstrek | Trim Levels



Convenience

- 152-hp 2.0-litre 4-cylinder SUBARU BOXER® engine with direct injection
- EyeSight® Driver Assist Technology⁷ with additional wide-angle mono camera
- Subaru Symmetrical Full-Time All-Wheel Drive
- Lineartronic® CVT (Continuously Variable Transmission) with Active Torque Vectoring
- X-MODE® featuring Hill Descent Control
- Auto-on/off LED Steering Responsive Headlights with High Beam Assist
- 17-inch aluminum-alloy wheels with black finish
- Power adjustable, heated exterior mirrors
- Windshield wiper de-icer
- Roof rails
- Roofline spoiler with integrated brake light
- Cloth upholstery
- 6-way manually adjustable driver's seat. 4-way manually adjustable front-passenger's seat.
- Dual-zone automatic climate control
- Dual-mode heated front seats
- Driver and front-passenger auto-up/down power windows
- Rearview camera with dynamic guidelines
- Dual 7-inch infotainment system with high-resolution touchscreen display, AM/FM/MP3/WMA audio system with Apple CarPlay®¹ and Android™ Auto³ functionality, USB-A input port, auxiliary audio input, steering wheel-integrated controls, Bluetooth®⁸ mobile phone connectivity with voice activation and Bluetooth®⁸ streaming audio, SiriusXM® capability⁹ and 4 speakers



Touring

Includes Convenience key features and adds/upgrades:

- 17-inch aluminum-alloy wheels with black and machined finish
- LED fog lights
- Exterior mirrors with integrated turn signals
- Proximity key with push-button start
- Premium cloth upholstery
- Leather-wrapped steering wheel and shifter with leather shift boot
- Heated steering wheel
- Steering wheel-mounted paddle shifters
- Rear centre armrest with cup holders
- Illuminated USB-A and USB-C rear-seat charge ports
- Subaru Side/Rear Vehicle Detection (SRVD) system with Blind-Spot Detection and Rear Cross-Traffic Alert¹⁰
- 11.6-inch tablet-style infotainment system with high-resolution touchscreen display, AM/FM/MP3/WMA audio system with wireless Apple CarPlay®¹ and Android™ Auto³ functionality, illuminated USB-A and USB-C input ports, auxiliary audio input, steering wheel-integrated controls, Bluetooth®⁸ mobile phone connectivity with voice activation and Bluetooth®⁸ streaming audio, and SiriusXM® with 360L capability⁹
- SUBARU STARLINK® Connected Services¹¹ (free 3-year trial subscription included)
- 6 speakers
- Gauges with white illuminated gauge rings



Limited

Includes Touring key features and adds/upgrades:

- 182-hp 2.5-litre 4-cylinder SUBARU BOXER engine with direct injection
- Dual-Mode X-MODE with Snow/Dirt and Deep Snow/Mud modes
- 18-inch aluminum-alloy wheels with black and machined finish
- Power tilting and sliding glass sunroof
- Dark grey fog light bezels
- Leather-trimmed upholstery with orange stitching
- 10-way power adjustable driver's seat with lumbar support
- Reverse Automatic Braking¹⁴
- DriverFocus™ Distraction Mitigation System¹⁵
- 11.6-inch tablet-style infotainment system with high-resolution touchscreen display, GPS navigation, AM/FM/MP3/WMA audio system with wireless Apple CarPlay®¹ and Android™ Auto³ functionality, USB-A and USB-C input ports, auxiliary audio input, steering wheel-integrated controls, Bluetooth®⁸ mobile phone connectivity with voice activation and Bluetooth®⁸ streaming audio, and SiriusXM® with 360L capability⁹
- Qi® wireless smartphone charging pad^{12,13}
- 10-speaker, 432-watt-equivalent Harman Kardon®¹⁶ premium audio system
- Cargo-area tonneau cover



Onyx

Includes Touring key features and adds/upgrades:

- 182-hp 2.5-litre 4-cylinder SUBARU BOXER engine with direct injection
- Dual-Mode X-MODE with Snow/Dirt and Deep Snow/Mud modes
- 18-inch aluminum-alloy wheels with black finish
- Power tilting and sliding glass sunroof
- Gloss black grille, exterior mirrors, rear spoiler and gate accents
- Yellow fog light bezels
- 10-way power adjustable driver's seat with lumbar support
- Aluminum-alloy pedal covers
- Sport cloth upholstery with yellow accents, stitching and black headliner
- Qi® wireless smartphone charging pad^{12,13}
- Gauges with yellow illuminated gauge rings
- Cargo-area tonneau cover
- Reverse Automatic Braking¹⁴



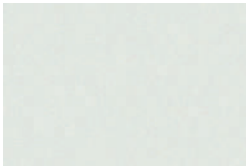
Wilderness

Includes Touring key features and adds/upgrades:

- 182-hp 2.5-litre 4-cylinder SUBARU BOXER engine with direct injection
- Advanced Dual-Mode X-MODE with Snow/Dirt and Deep Snow/Mud modes and low-speed/low-ratio-gradient control
- Black-finish exterior mirrors with integrated turn signals
- 235 mm of ground clearance
- 1588 kg max towing capacity¹⁷
- 4 tow points with Anodized Copper-finish covers
- 17-inch aluminum-alloy wheels with matte-black finish and Yokohama®¹⁸ GEOLANDAR All-Terrain tires
- Hexagonal LED fog lights
- Crosstrek Wilderness-design front and rear bumper covers, fender flares, side cladding and front grille
- Matte-black, anti-glare hood decal
- Raised roof rails with Anodized Copper-finish accents
- Subaru Wilderness badging on front doors and rear gate
- Black badging
- All-weather soft-touch upholstery with Anodized Copper-finish accents and contrast stitching
- 10-way power adjustable driver's seat with lumbar support
- Crosstrek Wilderness-design all-weather floor mats and cargo-area tray
- Gauges with Anodized Copper-colour illuminated gauge rings
- Leather-wrapped steering wheel with Anodized Copper stitching
- Shifter handle with leather boot, Anodized Copper stitching and gloss black trim
- 10-speaker, 432-watt-equivalent Harman Kardon®¹⁶ premium audio system
- Qi® wireless smartphone charging pad^{12,13}
- LED rear gate light
- Cargo-area tonneau cover
- Reverse Automatic Braking¹⁴

2025 Crosstrek | Colours

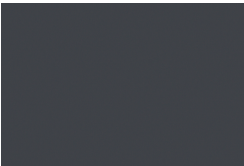
Exterior Colours



Crystal White Pearl



Ice Silver Metallic



Offshore Blue Metallic



Alpine Green



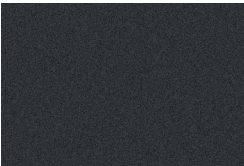
Sun Blaze Pearl



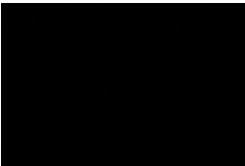
Pure Red



Sapphire Blue Pearl



Magnetite Grey Metallic

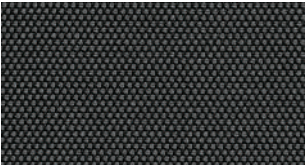


Crystal Black Silica

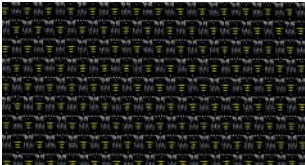


Geyser Blue

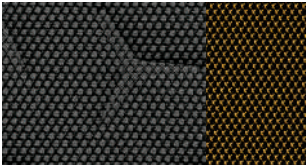
Seat Material



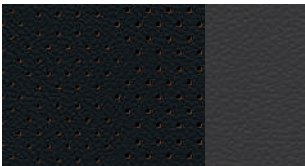
Grey Cloth (GC)



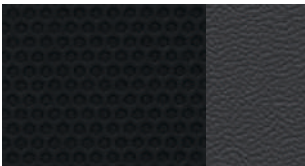
Black Premium Cloth (BPC)



Grey Premium Cloth (GPC)



Black Leather (BL)



All-Weather Soft-Touch Upholstery (GST)

Colour Combinations	Convenience	Touring	Onyx	Limited	Wilderness
Crystal White Pearl	GC	BPC	GPC	BL	GST
Ice Silver Metallic	–	–	GPC	BL	GST
Offshore Blue Metallic	GC	BPC	GPC	BL	–
Alpine Green	–	–	–	–	GST
Sun Blaze Pearl	–	BPC	–	BL	GST
Pure Red	–	BPC	GPC	BL	–
Sapphire Blue Pearl	GC	BPC	GPC	BL	–
Magnetite Grey Metallic	GC	BPC	GPC	BL	GST
Crystal Black Silica	GC	BPC	GPC	BL	GST
Geyser Blue	–	–	–	–	GST



Subaru Warranties

Every Subaru vehicle is designed and built to offer our customers the highest possible level of quality and reliability. We are proud of our vehicles and proud to stand behind them with a comprehensive warranty. For 2025 model-year vehicles, the warranty on all Subaru vehicles consists of the following:

New Vehicle Limited Warranty (36 month/60,000 km) – Covers basic and major components for 36 months or 60,000 km.

Major Component Limited Warranty (60 month/100,000 km) – Extends coverage of major components (more than just powertrain) up to 60 months or 100,000 km.

Surface Corrosion Limited Warranty (36 month/60,000 km) – Covers surface corrosion to visible painted body panels for 36 months or 60,000 km.

Anti-Perforation Limited Warranty (60 month/unlimited km) – Covers perforation due to corrosion to body sheet metal panels for 60 months, regardless of kilometres.

Emission Control System Limited Warranty – Covers some emissions components for 36 months or 60,000 km and the major parts of the emission control system for 96 months or 130,000 km.

Parts and Accessories Limited Warranty – Covers Subaru parts and accessories installed by the Subaru dealer prior to retail delivery of the vehicle for 36 months or 60,000 km, and Subaru parts and accessories installed by the Subaru dealer after the retail delivery of the vehicle for 12 months or 20,000 km from the date of the installation.

The above information is an overview of warranty coverage and is not a warranty statement. If you wish to see more details regarding Subaru warranties, please refer to your Subaru warranty booklet, contact your local Subaru dealer or visit our Web site at [subaru.ca](https://www.subaru.ca).

Subaru 360 C.A.R.E. Program (36 months/unlimited km)

Access to dedicated Subaru 360 C.A.R.E. (Customer Assistance for Roadside Emergencies) Roadside Assistance Services, which includes access to 1,000 CAA and AAA offices throughout Canada and the United States. In addition to towing, coverage also includes Fuel Delivery, Battery Boost, Flat Tire Service, Lock-Out Service, Trip Accident & Mechanical Breakdown Assistance Service, Winching and Extrication Service, Personalized Trip Planning and Routing, Theft and Hit-and-Run Reward, and Arrest Bond Certificate.

The above information is an overview of services. If you wish to see more details regarding Subaru 360 C.A.R.E., please visit our Web site at [subaru.ca](https://www.subaru.ca).

Subaru Protection Plan

As a Subaru owner, you have expectations for a pleasurable, trouble-free ownership experience – now and into the future. Once your 36-month/60,000-km New Vehicle Limited Warranty period ends¹, our Subaru Protection Plan (SPP) – the only vehicle service contract endorsed by Subaru Canada for Subaru vehicles – can prolong your hassle-free ownership experience with three levels of extended service contract coverage tailored to your needs: Powertrain Protection; Major Protection; or Complete Protection (best level of coverage to complement the 60-month/100,000-km Major Component Limited Warranty). SPP offers comprehensive mechanical and electrical coverage and a number of additional features and benefits, such as Roadside Assistance and Alternate Transportation, for up to 7 years or 160,000 kilometres from your vehicle's in-service date. Whether your vehicle is purchased or leased, SPP protects you and your investment. Be sure to ask your Subaru dealer for details or visit [subaru.ca](https://www.subaru.ca).

¹ If you already own a Subaru vehicle and it is still within the 36-month/60,000-km New Vehicle Limited Warranty period, you are still eligible for SPP.

Subaru vehicles are uniquely designed to get out there more and to leave less behind. We build our vehicles for maximum longevity, because more time spent on the road equals less time spent in junkyards and landfills. In fact, 97% of Subaru vehicles sold in Canada over the last 10 years are still on the road today¹. You'll also find very little waste created in the production of a Subaru. Many of our vehicles are built in the Subaru of Indiana Automotive, Inc., (SIA) factory, which was the first manufacturing facility in the U.S. to achieve zero-landfill status. Other Subaru facilities around the world now achieve similar goals in helping to preserve the environment. Respect for our surroundings is yet another way that Subaru vehicles help to build driver confidence for the road ahead.

¹ Based on S&P Global Mobility Vehicles in Operation as of June 30, 2024 for Model Years 2015 to 2024 vs. Total New Registrations of those vehicles.



For a detailed list of specifications, features, accessories and model comparisons, please visit Subaru.ca or your nearest authorized Subaru Dealer.

The Supplemental Restraint System (SRS airbags) affords the driver and passenger additional protection in some collisions. This system provides supplemental protection only, and seatbelts must be worn in order to avoid injuries to out-of-position occupants upon airbag deployment. The combination of SRS and seatbelts provides the best protection in a serious accident. All illustrations, specifications, features and photographs contained in this brochure are based on product information available at the time of its printing and may not be completely accurate following its publication. For the most up-to-date and detailed product information, log on to www.subaru.ca. Colours shown may vary due to reproduction variations in the printing process, and some vehicle parts cannot be shown in certain photographs. Subaru Canada, Inc. reserves the right to discontinue or make changes at any time, without notice or incurring obligations, to colours, materials, equipment, accessories, features, specifications and models or to change their prices. Some models shown may be from international markets and are not available in Canada; may be shown with equipment or accessories that are optional (at extra cost) or available only in certain combinations; or may be subject to product delays or not be available in Canada. Please visit subaru.ca for the latest information and specifications. For complete details on product updates and warranties, please contact your Subaru dealer. Ascent, BRZ, Crosstrek, Forester, Impreza, Legacy, Outback, Solterra, WRX, EyeSight, Lineartronic, STARLINK, Subaru, SUBARU BOXER, SUBARU STARLINK, Wilderness and X-MODE are registered trademarks of SUBARU CORPORATION. DriverFocus is a trademark of SUBARU CORPORATION. Android™ is a trademark of Google LLC†. Apple CarPlay® is a registered trademark of Apple Inc.† Bluetooth® is a registered trademark of Bluetooth SIG, Inc., America. Harman Kardon® is a registered trademark of Harman International Industries, Inc. Qi® is a registered trademark of Wireless Power Consortium, Inc. SiriusXM® and the SiriusXM logo, channel names and logos are trademarks of Sirius XM Radio Inc. and are used under licence by Sirius XM Canada Inc. Subscriptions to SiriusXM Canada are subject to the SiriusXM Canada Customer Agreement and other terms & conditions. SiriusXM collects, uses and discloses your personal information according to its Privacy Policy. Yokohama® is a registered trademark of Yokohama Tire Corp.

† Ability of this product to access connected content is subject to change without notice and could be affected by any of the following: compatibility issues with future firmware versions of the smartphone; compatibility issues with future versions of the connected content application(s) for the smartphone; changes to or discontinuation of the connected content application(s) or service by its provider.

Printed in Canada. © 2025 Subaru Canada, Inc. 2025 model year.



Environmental Management System
(EMS) ISO 14001:2015 certified by SGS

This brochure was printed on certified paper and contains recycled fibre. It is chlorine-free, recyclable and biodegradable. It was produced using a "Green Printing Process" which includes vegetable-based inks that make this brochure fully recyclable leaving no harmful residue. Please recycle.



PROCESS CERTIFIED FOR REDUCED
ENVIRONMENTAL IMPACT. VIEW
SPECIFIC ATTRIBUTES EVALUATED
UL.COM/UL
UL 2801

subaru.ca

SUBARU CANADA, INC.

560 Suffolk Court, Mississauga, ON, L5R 4J7