



SUBARU

CROSSTREK



It's about everything that lies between points A and B.

Meet the all-new Subaru Crosstrek

There are miles to go before you reach that campsite you booked months ago, but in your all-new 2024 Crosstrek, the adventure can always start right here on the road. So feel free to explore all those in-between destinations along the way. Once you arrive and take in the view, you might even consider a point C.

Capable

Beyond the roads that are smooth and flat, the Crosstrek proves itself with standard Subaru Symmetrical Full-Time All-Wheel Drive and 220 mm of ground clearance. If the terrain gets steep and slippery, available dual-function X-MODE® provides the traction and confidence you need to push on¹.

Durable

Every Subaru is built to last. That's thanks in part to the SUBARU BOXER® engine. Its horizontal design means less wear and tear—and it's at the core of every Crosstrek. There's also an engine option with more power to push your adventures farther.

Connected

Providing you with simple, seamless access to your music and apps, SUBARU STARLINK® smartphone integration includes standard Apple CarPlay®² and Android™ Auto³ integration. Wireless connectivity and charging are now available for even greater ease¹, plus you can opt for a larger 11.6-inch touchscreen¹ and Remote Engine Start with Climate Control, which lets you set the perfect temperature even before you step in^{1,4}.

Safe

To help protect you and your passengers, the Crosstrek is equipped with our latest EyeSight® Driver Assist Technology, now with an additional wide-angle camera for enhanced detection and intervention performance⁵. For even greater peace of mind, you can opt for a number of all-around safety systems, including Blind-Spot Detection^{1,6}, Reverse Automatic Braking^{1,7}, SUBARU STARLINK® Connected Services^{1,8} and the DriverFocus® Distraction Mitigation System^{1,9} to help reduce distracted or drowsy driving.





1 Availability varies by trim level. See your Subaru dealer for details. 2 Apple CarPlay® is a registered trademark of Apple Inc. 3 Android™ Auto is a trademark of Google LLC. 4 Requires Keyless Access with Push-Button Start and subscription to STARLINK® Connected Services. 3-year free trial included. See your Subaru dealer for details. 5 EyeSight® is a driver assist technology, which may not operate optimally under all driving conditions. The driver is always responsible for safe and attentive driving. System effectiveness depends on many factors such as vehicle maintenance, weather and road conditions. Advanced Adaptive Cruise Control and Brake Light Recognition are designed to assist the driver and are not substitutes for safe and attentive driving. Lane Departure Prevention operates only when the lane markings are visible, and system effectiveness depends on many factors. Lane centring function operates only when used in conjunction with Advanced Adaptive Cruise Control. See Owner's Manual for complete details on system operations and limitations. 6 Blind-Spot Detection, Lane Change Assist and Rear Cross-Traffic Alert are systems designed to assist the driver by monitoring the rear and side areas of the vehicle during a lane change or reversing and are not a substitute for safe and attentive driving. 7 The Reverse Automatic Braking System is not a substitute for safe and attentive driving. System effectiveness depends on many factors, such as vehicle maintenance, weather and road conditions. Always exercise caution and use vehicle mirrors and the Rearview Camera when backing up. See Owner's Manual for complete details on system operation and limitations. 8 Activation with subscription required. 9 The DriverFocus® Distraction Mitigation System is a driver recognition technology designed to alert drivers if their attention to the road wavers or if the driver's face appears to turn away. The driver is always responsible for safe and attentive driving. System effectiveness may be affected by articles of clothing worn on the head or face. See Owner's Manual for complete details on system operation and limitations.

Miles of good road ahead.

When conditions get slippery, steep or bumpy, there's no need to reroute. You're in the all-new Crosstrek, which means you have standard Subaru Symmetrical Full-Time All-Wheel Drive and 220 mm of reassuring ground clearance. Facing hilly or challenging terrain? X-MODE® with Hill Descent Control enhances traction so you can forge ahead with confidence.

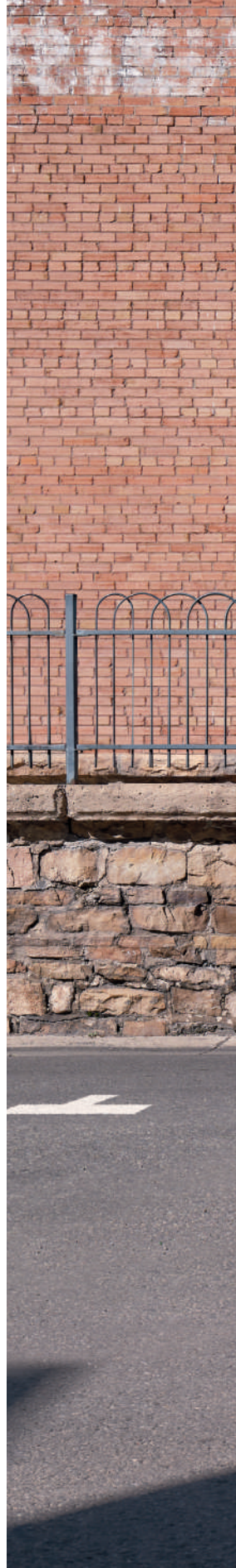




Keep your friends close and your destinations far out.

The 2024 Crosstrek Onyx—rugged inside and out

The Crosstrek Onyx certainly stands out with its gloss black 18-inch wheels and spoiler, yellow exterior accents and unique interior. But it's built to do more than turn heads. Its SUBARU BOXER® engine delivers 182 horsepower, and its dual-function X-MODE® system includes terrain-specific settings designed to take on snow and dirt or deep snow and mud. So grab some friends and head for the horizon.





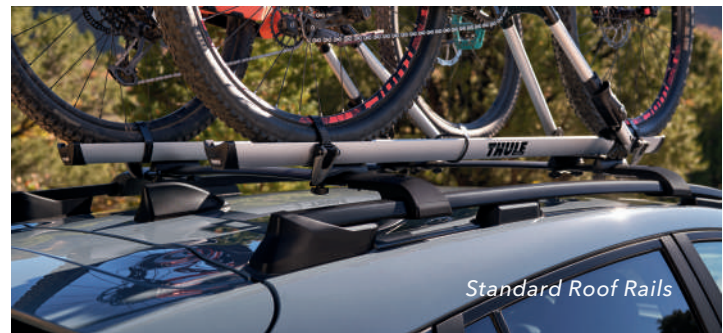




Bring it. All of it.

Gear-friendly and versatile

The Crosstrek takes the process out of packing up. You have up to 1549 litres of cargo room and a host of versatile features to work with, including a wide rear gate opening, standard roof rails and a cargo tonneau cover¹ to keep your gear protected in the back. There's also a 60/40-split flat-folding rear seatback to accommodate longer items and a passenger or two on the same trip.



Standard Roof Rails



60/40 Seating

Vehicles shown with optional accessories. See your Subaru dealer for details. ¹ Onyx and Limited trims only. See your Subaru dealer for details.

Compact or roomy? Yes.

Though it might be able to squeeze into tight parking spots, the Crosstrek is noticeably roomy on the inside with up to 2846 litres¹ of passenger space. Enter easily through its wide door openings, and sink into its supportive seats, available in durable cloth or supple leather². It won't matter if your journey has hours left to go.



1 Without available power sunroof. 2 Limited trim only. See your Subaru dealer for details. 3 Onyx and Limited trims only. See your Subaru dealer for details. 4 Touring, Onyx and Limited trims only. See your Subaru dealer for details.





Apple CarPlay¹ and Android™ Auto²



Qi Wireless Charging^{3,4}



Make a connection.

Wherever you're headed, you're even more connected in the all-new Crosstrek. SUBARU STARLINK® smartphone integration comes standard with Apple CarPlay®¹ and Android™ Auto² integration, plus you can now opt for available wireless connectivity³ and Qi wireless smartphone charging^{3,4} to keep your cockpit cable-free. Other available features now include a large 11.6-inch touchscreen³ and a new Harman Kardon®⁵ premium audio system with 10 speakers³, so you can listen to your playlists as they were intended. Thanks to the convenience of Remote Engine Start with Climate Control, you can use your phone to set the perfect temperature even before you step in^{3,6}.



Harman Kardon® Premium Audio^{3,5}

¹ Apple CarPlay® is a registered trademark of Apple Inc.¹ ² Android™ Auto is a trademark of Google LLC¹. ³ Availability varies by trim level. See your Subaru dealer for details. ⁴ Qi wireless charging may not be compatible with all mobile devices. When using the wireless charging system, avoid placing metal objects between the wireless charger and the mobile device when charging is active. Doing so may cause metal objects to become hot and could cause burns. ⁵ Harman Kardon® is a registered trademark of Harman International Industries, Inc. ⁶ Requires Keyless Access with Push-Button Start and subscription to STARLINK® Connected Services. 3-year free trial included. See your Subaru dealer for details.

An extra set of eyes every time you drive.

Every Crosstrek includes the latest Subaru EyeSight® Driver Assist Technology¹, now with an additional wide-angle camera to better detect pedestrians and bicycles, plus an electronic brake booster for improved responsiveness and Automatic Emergency Steering². Equipped with a comprehensive suite of innovative safety features, EyeSight® looks ahead, alerts you to potential dangers and can even intervene to help you avoid a collision.

¹ EyeSight® is a driver assist technology, which may not operate optimally under all driving conditions. The driver is always responsible for safe and attentive driving. System effectiveness depends on many factors such as vehicle maintenance, weather and road conditions. The Pre-Collision Braking System is designed to provide automatic braking that either prevents a collision or reduces the severity of a frontal impact. Pre-Collision Throttle Management is designed to reduce acceleration and minimize the severity of certain frontal impacts. Lane Centring Assist is designed to assist the driver and is not a substitute for safe and attentive driving. Lane centring function operates only when used in conjunction with Adaptive Cruise Control. The Lane Departure and Sway Warning, and Lane Keep Assist operate only when the lane markings are visible, and their effectiveness depends on many factors. See Owner's Manual for complete details on system operation and limitations. ² Availability varies by trim level. See your Subaru dealer for details. ³ The DriverFocus® Distraction Mitigation System is a driver recognition technology designed to alert drivers if their attention to the road wavers or if the driver's face appears to turn away. The driver is always responsible for safe and attentive driving. System effectiveness may be affected by articles of clothing worn on the head or face. See Owner's Manual for complete details on system operation and limitation.



Pre-Collision Braking¹

Can help slow and bring your Crosstrek to a full stop if necessary.



Advanced Adaptive Cruise Control with Lane Centring¹

Automatically keeps you centred in your lane, at a safe distance behind the car in front of you—even in traffic and around curves.



Pre-Collision Throttle Management¹

Can reduce your engine power to help give you more time to react and to help minimize the possible impact force and frontal impact damage.



Lane Departure and Sway Warning with Lane Departure Prevention¹

Can alert you with visual and audible warnings if you drift to the edge of your lane and begin to cross into another. And when activated, Lane Departure Prevention can even help steer you back into your proper course.



Creating safer roads by reducing distracted driving.

Subaru is taking on one of the biggest issues in the automotive industry: distracted driving. The Crosstrek features an award-winning, state-of-the-art safety system that helps reduce distracted driving for both new and experienced drivers. Working with EyeSight^{®1} Driver Assist Technology, DriverFocus^{®2,3} is like having an attentive co-pilot along for the ride, ready to give a helpful alert if a driver becomes distracted or drowsy.



Blind-Spot Detection

Using radar sensors, Blind-Spot Detection warns you with a visual indicator on your exterior mirror if it senses a vehicle in your blind spot. Another feature of this system, Lane Change Assist, alerts you with a flashing indicator on your exterior mirror if it senses a vehicle approaching at a higher speed in a neighbouring lane and you signal for a lane change^{2,3}.



Rear Cross-Traffic Alert

Rear Cross-Traffic Alert uses radar sensors to help warn you of traffic approaching from the side as you are backing up, utilizing a flashing visual indicator on your exterior mirror and Rearview Camera display as well as an audible warning^{2,3}.

1 Always wear seat belts. Children should be properly restrained in the rear seat. 2 Availability varies by trim level. See your Subaru dealer for details. 3 Blind-Spot Detection, Lane Change Assist and Rear Cross-Traffic Alert are systems designed to assist the driver by monitoring the rear and side areas of the vehicle during a lane change or reversing and are not a substitute for safe and attentive driving. 4 The Reverse Automatic Braking System is not a substitute for safe and attentive driving. System effectiveness depends on many factors, such as vehicle maintenance, weather and road conditions. Always exercise caution and use vehicle mirrors and the Rearview Camera when backing up. See Owner's Manual for complete details on system operation and limitations. 5 Activation with subscription required.

Your peace of mind is our strong suit.

Safety is more than a duty for us—it's a passion. That's why every Crosstrek is built on the strength of the Subaru Global Platform, providing a rigid body structure for high crash-energy absorption. And every Crosstrek comes with 8 airbags, including a new front-passenger seat cushion airbag¹. To enhance all-around awareness and visibility, other standard features include a Rearview Camera plus LED Steering Responsive Headlights with High Beam Assist. And with a number of available active safety systems, you can have even more peace of mind as you get out there.



Reverse Automatic Braking

Reverse Automatic Braking can detect objects directly behind your vehicle when backing up at a low speed and can help bring the Crosstrek to a stop if it detects an object within its range and the brakes have yet to be applied. There's also the Rearview Camera to help you keep an eye out^{2,4}.



SUBARU STARLINK® Connected Services

The Crosstrek features next-generation SUBARU STARLINK® Connected Services technology^{2,5}, bringing you added safety, security and convenience. It can alert a first responder in an emergency, help police locate your vehicle if it's stolen and more. And to get you started, new Crosstrek drivers enjoy a free three-year SUBARU STARLINK® Connected Services subscription, which includes Advanced Automatic Collision Notification, Enhanced Roadside Assistance, SOS Emergency Assistance and more.

2024 Crosstrek | Features & Dimensions

Apple CarPlay^{®1,2} / Android[™] Auto^{2,3}



Power Glass Sunroof⁴ and Roof Rails



18-inch Aluminum-alloy Wheels⁵



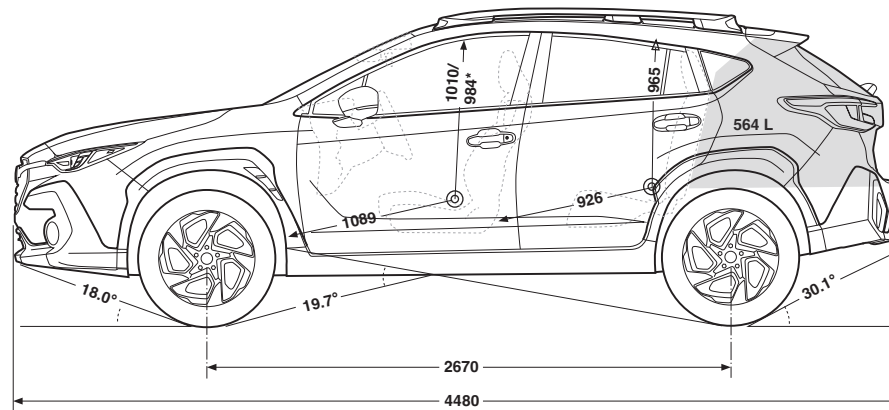
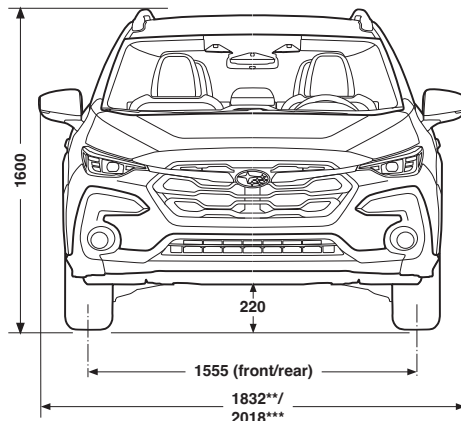
10-way Power Driver Seat⁴



Dual-zone Automatic Climate Control



Heated Steering Wheel⁶



Measurements in millimetres unless specified.

- * With available sunroof.
- ** With mirrors folded.
- *** Mirrors extended.

For a detailed list of specifications, features, accessories and model comparisons, please visit Subaru.ca or your nearest authorized Subaru Dealer.

1 Apple CarPlay[®] and iPod[®] are registered trademarks of Apple Inc. 2 Compatible smartphone and applications required. Data provided by smartphone is displayed on the audio system screen. Some provinces prohibit the operation of handheld electronic devices while operating a vehicle. Smartphone apps should only be launched when vehicle is safely parked. Aha[™] is a trademark of Harman International Industries, Inc. Your wireless carrier's rates may apply. 3 Android[™] Auto is a trademark of Google LLC¹. 4 Onyx and Limited trims only. Not available on Convenience and Touring trims. 5 Onyx and Limited trims only. Finish will vary. 6 Touring, Onyx and Limited trims only. 7 EyeSight[®] is a driver assist technology, which may not operate optimally under all driving conditions. The driver is always responsible for safe and attentive driving. System effectiveness depends on many factors such as vehicle maintenance, weather and road conditions. See Owner's Manual for complete details on system operation and limitations. 8 Bluetooth[®] is a registered trademark of Bluetooth SIG, Inc., America. 9 Activation and required monthly subscription sold separately. Includes 3-month free trial subscription. See your Subaru dealer for details. SiriusXM[®] and the SiriusXM logo, channel names and logos are trademarks of Sirius XM Radio Inc. and are used under licence by Sirius XM Canada Inc. Subscriptions to SiriusXM Canada are subject to the SiriusXM Canada Customer Agreement and other terms & conditions. SiriusXM collects, uses and discloses your personal information according to its Privacy Policy. 10 Blind-Spot Detection, Lane Change Assist and Rear Cross-Traffic Alert are systems designed to assist the driver by monitoring the rear and side areas of the vehicle during a lane change or reversing and are not a substitute for safe and attentive driving. 11 Activation with subscription required. 12 The Reverse Automatic Braking System is not a substitute for safe and attentive driving. System effectiveness depends on many factors, such as vehicle maintenance, vehicle speed, weather and road conditions. Always exercise caution and use vehicle mirrors and the Rearview Camera when backing up. See Owner's Manual for complete details on system operation and limitations. 13 The DriverFocus[®] Distraction Mitigation System is a driver recognition technology designed to alert drivers if their attention to the road wavers or if the driver's face appears to turn away. The driver is always responsible for safe and attentive driving. System effectiveness may be affected by articles of clothing worn on the head or face. See Owner's Manual for complete details on system operation and limitations. 14 Harman Kardon[®] is a registered trademark of Harman International Industries, Inc.

2024 Crosstrek | Trim Levels



Convenience

- 152-hp 2.0-litre 4-cylinder SUBARU BOXER® engine with direct-injection
- EyeSight® Driver Assist Technology⁷ with additional wide-angle mono camera
- Subaru Symmetrical Full-Time All-Wheel Drive
- Lineartronic® CVT (Continuously Variable Transmission) with Active Torque Vectoring
- X-MODE® featuring Hill Descent Control
- Auto-on/off LED Steering Responsive Headlights with High Beam Assist
- 17-inch aluminum-alloy wheels with black finish
- Power-adjustable, heated, exterior mirrors
- Windshield wiper de-icer
- Roof rails
- Roofline spoiler with integrated brake light
- Cloth upholstery
- 6-way manually adjustable driver seat. 4-way manually adjustable front-passenger seat.
- Dual-zone automatic climate control
- Dual-mode heated front seats
- Driver and front-passenger auto-up/down power windows
- Rearview camera with dynamic guidelines
- Dual 7-inch infotainment system with high-resolution touchscreen display, AM/FM/MP3/WMA audio system with Apple CarPlay®¹ and Android™ Auto³ functionality, USB-A input port, auxiliary audio input, steering wheel-integrated controls, Bluetooth®⁸ mobile phone connectivity with voice activation and Bluetooth®⁸ streaming audio, and SiriusXM® capability⁹
- 4 speakers



Onyx

Includes Touring key features and adds/upgrades:

- 182-hp 2.5-litre 4-cylinder SUBARU BOXER® engine with direct-injection
- Dual-function X-MODE® with Snow/Dirt and Deep Snow/Mud modes
- 18-inch aluminum-alloy wheels with black finish
- Power tilting and sliding glass sunroof
- Gloss black grille, exterior mirrors, rear spoiler and gate accents
- Yellow fog light bezels
- 10-way power-adjustable driver seat with lumbar support
- Aluminum-alloy pedal covers
- Sport cloth upholstery with yellow accents, stitching and black headliner
- Gauges with yellow illuminated gauge rings
- Cargo area tonneau cover
- Reverse Automatic Braking¹²



Touring

Includes Convenience key features and adds/upgrades:

- 17-inch aluminum-alloy wheels with black and machined finish
- LED fog lights
- Exterior mirrors with integrated turn signals
- Proximity key with push-button start
- Premium cloth upholstery
- Leather-wrapped steering wheel and shifter with leather shift boot
- Heated steering wheel
- Steering wheel-mounted paddle shifters
- Rear centre armrest with cupholders
- Illuminated USB-A and USB-C rear-seat charge ports
- Subaru Side/Rear Vehicle Detection (SRVD) system with Blind-Spot Detection and Rear Cross-Traffic Alert¹⁰
- 11.6-inch tablet-style infotainment system with high-resolution touchscreen display, AM/FM/MP3/WMA audio system with wireless Apple CarPlay®¹ and Android™ Auto³ functionality, illuminated USB-A and USB-C input ports, auxiliary audio input, steering wheel-integrated controls, Bluetooth®⁸ mobile phone connectivity with voice activation and Bluetooth®⁸ streaming audio, and SiriusXM® capability⁹
- SUBARU STARLINK® Connected Services¹¹ (free 3-year trial subscription included)
- 6 speakers
- Gauges with white illuminated gauge rings



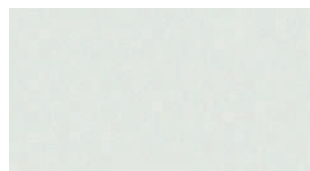
Limited

Includes Touring key features and adds/upgrades:

- 182-hp 2.5-litre 4-cylinder SUBARU BOXER® engine with direct-injection
- Dual-function X-MODE® with Snow/Dirt and Deep Snow/Mud modes
- 18-inch aluminum-alloy wheels with black and machined finish
- Power tilting and sliding glass sunroof
- Dark grey fog light bezels
- Leather-trimmed upholstery with orange stitching
- 10-way power-adjustable driver seat with lumbar support
- Reverse Automatic Braking¹²
- DriverFocus® Distraction Mitigation System¹³
- 11.6-inch tablet-style infotainment system with high-resolution touchscreen display, GPS navigation, AM/FM/MP3/WMA audio system with wireless Apple CarPlay®¹ and Android™ Auto³ functionality, USB-A and USB-C input ports, auxiliary audio input, steering wheel-integrated controls, Bluetooth®⁸ mobile phone connectivity with voice activation and Bluetooth®⁸ streaming audio, and SiriusXM® capability⁹
- 10-speaker, 432-watt-equivalent Harman Kardon®¹⁴ premium audio system
- Cargo area tonneau cover

2024 Crosstrek | Colours

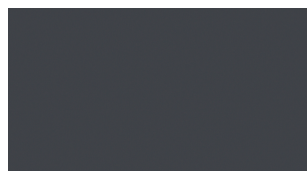
Exterior Colours



Crystal White Pearl



Ice Silver Metallic



Offshore Blue Metallic



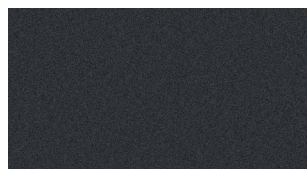
Sun Blaze Pearl



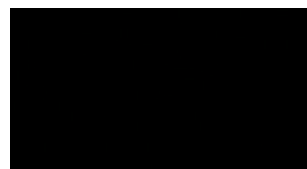
Pure Red



Sapphire Blue Pearl

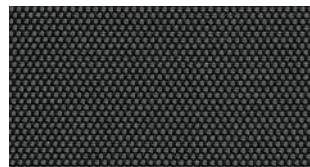


Magnetite Grey Metallic

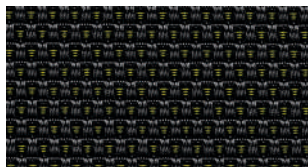


Crystal Black Silica

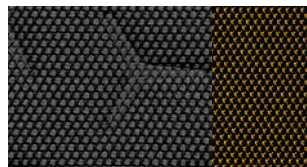
Seat Material



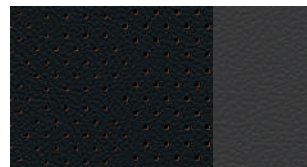
Grey Cloth (GC)



Black Premium Cloth (BPCT)
Touring



Grey Premium Cloth (GPCO)
Onyx



Black Leather (BL)

Colour Combinations	Convenience	Touring	Onyx	Limited
Crystal White Pearl	GC	BPCT	GPCO	BL
Ice Silver Metallic	–	–	GPCO	BL
Offshore Blue Metallic	GC	BPCT	GPCO	BL
Sun Blaze Pearl	–	BPCT	–	BL
Pure Red	–	BPCT	GPCO	BL
Sapphire Blue Pearl	GC	BPCT	GPCO	BL
Magnetite Grey Metallic	GC	BPCT	GPCO	BL
Crystal Black Silica	GC	BPCT	GPCO	BL



Subaru Warranties

Every Subaru vehicle is designed and built to offer our customers the highest possible level of quality and reliability. We are proud of our vehicles and proud to stand behind them with a comprehensive warranty. For 2024 model-year vehicles, the warranty on all Subaru vehicles consists of the following:

New Vehicle Limited Warranty (36 month/60,000 km) – Covers basic and major components for 36 months or 60,000 km.

Major Component Limited Warranty (60 month/100,000 km) – Extends coverage of major components (more than just powertrain) up to 60 months or 100,000 km.

Surface Corrosion Limited Warranty (36 month/60,000 km) – Covers surface corrosion to visible painted body panels for 36 months or 60,000 km.

Anti-Perforation Limited Warranty (60 month/unlimited km) – Covers perforation due to corrosion to body sheet metal panels for 60 months, regardless of kilometres.

Emission Control System Limited Warranty – Covers some emissions components for 36 months or 60,000 km and the major parts of the emission control system for 96 months or 130,000 km.

Parts and Accessories Limited Warranty – Covers Subaru parts and accessories installed by the Subaru dealer prior to retail delivery of the vehicle for 36 months or 60,000 km, and Subaru parts and accessories installed by the Subaru dealer after the retail delivery of the vehicle for 12 months or 20,000 km from the date of the installation.

The above information is an overview of warranty coverage and is not a warranty statement. If you wish to see more details regarding Subaru warranties, please refer to your Subaru warranty booklet, contact your local Subaru dealer or visit our Web site at subaru.ca.

Subaru 360 C.A.R.E. Program (36 months/unlimited km)

Access to dedicated Subaru 360 C.A.R.E. (Customer Assistance for Roadside Emergencies) Roadside Assistance Services, which includes access to 1,000 CAA and AAA offices throughout Canada and the United States. In addition to towing, coverage also includes Fuel Delivery, Battery Boost, Flat Tire Service, Lock-Out Service, Trip Accident & Mechanical Breakdown Assistance Service, Winching and Extrication Service, Personalized Trip Planning and Routing, Theft and Hit-and-Run Reward, and Arrest Bond Certificate.

The above information is an overview of services. If you wish to see more details regarding Subaru 360 C.A.R.E., please visit our Web site at subaru.ca.

Subaru Protection Plan

As a Subaru owner, you have expectations for a pleasurable, trouble-free ownership experience – now and into the future. Once your 36-month/60,000-km New Vehicle Limited Warranty period ends¹, our Subaru Protection Plan (SPP) – the only vehicle service contract endorsed by Subaru Canada for Subaru vehicles – can prolong your hassle-free ownership experience with three levels of extended service contract coverage tailored to your needs: Powertrain Protection; Major Protection; or Complete Protection (best level of coverage to complement the 60-month/100,000-km Major Component Limited Warranty). SPP offers comprehensive mechanical and electrical coverage and a number of additional features and benefits, such as Roadside Assistance and Alternate Transportation, for up to 7 years or 160,000 kilometres from your vehicle's in-service date. Whether your vehicle is purchased or leased, SPP protects you and your investment. Be sure to ask your Subaru dealer for details or visit subaru.ca.

¹ If you already own a Subaru vehicle and it is still within the 36-month/60,000-km New Vehicle Limited Warranty period, you are still eligible for SPP.

Subaru vehicles are uniquely designed to get out there more and to leave less behind. We build our vehicles for maximum longevity, because more time spent on the road equals less time spent in junkyards and landfills. In fact, 96% of Subaru vehicles sold in Canada over the last 10 years are still on the road today¹. You'll also find very little waste created in the production of a Subaru. Many of our vehicles are built in the Subaru of Indiana Automotive, Inc., (SIA) factory, which was the first manufacturing facility in the U.S. to achieve zero-landfill status. Other Subaru facilities around the world now achieve similar goals in helping to preserve the environment. Respect for our surroundings is yet another way that Subaru vehicles help to build driver confidence for the road ahead.

¹ Based on IHS Markit Vehicles in Operation as of June 30, 2022, for Model Years 2013 to 2022 vs. Total New Registrations of those vehicles.



For a detailed list of specifications, features, accessories and model comparisons, please visit Subaru.ca or your nearest authorized Subaru Dealer.

The Supplemental Restraint System (SRS airbags) affords the driver and passenger additional protection in some collisions. This system provides supplemental protection only, and seatbelts must be worn in order to avoid injuries to out-of-position occupants upon airbag deployment. The combination of SRS and seatbelts provides the best protection in a serious accident. All illustrations, specifications, features, and photographs contained in this brochure are based on product information available at the time of its printing and may not be completely accurate following its publication. Colours shown may vary due to reproduction variations in the printing process, and some vehicle parts cannot be shown in certain photographs. Subaru Canada, Inc. reserves the right to discontinue or make changes at any time, without notice or incurring obligations, to colours, materials, equipment, accessories, features, specifications, and models or to change their prices. Some models shown may be from international markets and are not available in Canada; may be shown with equipment or accessories that are optional (at extra cost) or available only in certain combinations; or may be subject to product delays or not be available in Canada. Please visit subaru.ca for the latest information and specifications. For complete details on product updates and warranties, please contact your Subaru dealer. Ascent, BRZ, Crosstrek, Forester, Impreza, Legacy, Outback, Solterra, WRX, STI, DriverFocus, EyeSight, Lineartronic, SI-DRIVE, STARLINK, Subaru, SUBARU BOXER and X-MODE are registered trademarks of SUBARU CORPORATION. Aha™ is a trademark of Harman International Industries, Inc. Harman Kardon® and GreenEdge® are registered trademarks of Harman International Industries, Inc. Android™ is a trademark of Google LLC†. Apple CarPlay®† and iPod® are registered trademarks of Apple Inc. Bluetooth® is a registered trademark of Bluetooth SIG, Inc., America. SiriusXM® and the SiriusXM logo, channel names and logos are trademarks of Sirius XM Radio Inc. and are used under licence by Sirius XM Canada Inc. Subscriptions to SiriusXM Canada are subject to the SiriusXM Canada Customer Agreement and other terms & conditions. SiriusXM collects, uses and discloses your personal information according to its Privacy Policy.

† Ability of this product to access connected content is subject to change without notice and could be affected by any of the following: compatibility issues with future firmware versions of the smartphone; compatibility issues with future versions of the connected content application(s) for the smartphone; changes to or discontinuation of the connected content application(s) or service by its provider. Printed in Canada. © 2023 Subaru Canada, Inc. 2024 model year.



Environmental Management System
(EMS) ISO 14001:2015 certified by SGS

This brochure was printed on certified paper and contains recycled fibre. It is chlorine-free, recyclable and biodegradable. It was produced using a "Green Printing Process" which includes vegetable-based inks that make this brochure fully recyclable leaving no harmful residue. Please recycle.



PROCESS CERTIFIED FOR REDUCED ENVIRONMENTAL IMPACT. NEW SPECIFIC ATTRIBUTES EVALUATED. UL COMPLY. UL 2801

subaru.ca

SUBARU CANADA, INC.

560 Suffolk Court, Mississauga, ON, L5R 4J7